

Pressure transducer model KXF, KXF (Exi), KXFHT

Complete stainless steel thinfilm sensor with flush mounted stainless steel diaphragm
Accuracy 0,5 % and 1 % F.S.

Features

- Flush mounted diaphragm
- Sanitary application
- High temperature model up to 200 °C medium temperature
- Excellent long term stability
- Protection IP65
- Explosion proof (intrinsically safe) for zone 1 and 2 according ATEX



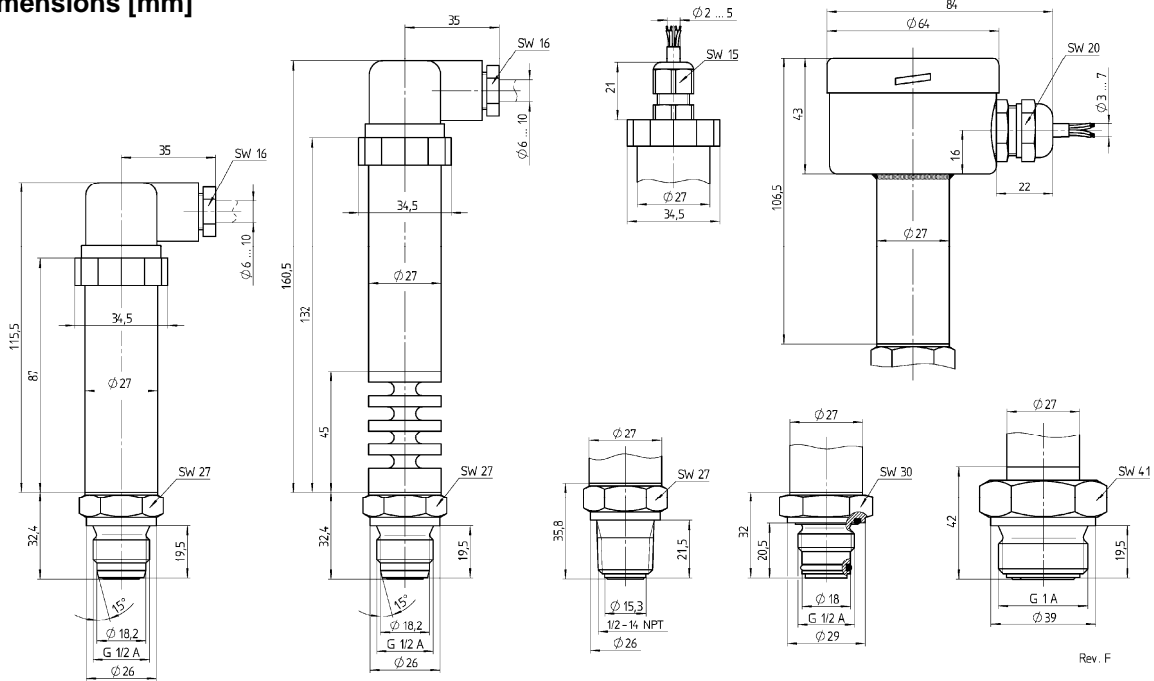
Ranges

- 1 ... 1,5 bar up to 0 ... 600 bar
-30 in. Hg ... 20 psi up to 0 ... 8.700 psi

Technical specification	KXF	KXFHT	KXF (Exi)
Measuring principle	Thinfilm		
Range [bar]	1 2,5 4 6 10 16 25 40 60 100 160 250 400 600		
Overpressure limit [bar]	6 6 10 14 20 40 70 100 138 200 304 525 640 900		
Pressure type	Gauge, vacuum and compound		
Process connection	G ½ A male according DIN 3852 with metal seal cone at the top G ½ A male with O-ring and sealing ring ½ NPT male according ANSI/ASME B1.20.1, others on request		
Material	Stainless steel 316Ti (1.4571) Stainless steel 316Ti (1.4571), Hastelloy C (only ½ NPT male) Silicon oil, Halocarbon or Almond oil Silicon oil Stainless steel diaphragm 1.4542/1.4548 (17-4PH) with polysilicium cell Stainless steel 304 (1.4301)		
Power supply	12 ... 30 VDC		12 ... 26 VDC
Output signal	4 ... 20 mA, 2-wire 0 ... 10 VDC, 3-wire 0 ... 5 VDC, 3-wire 1 ... 5/6 VDC, 3-wire 0 ... 20 mA, 3-wire		4 ... 20 mA, 2-wire
Maximum loop resistance for 4 ... 20 mA	≤ (U _B - 9 V) / 0,02 A		≤ (U _B - 11,2 V) / 0,02 A
Explosion proof (intrinsically safe)	EEx ib IIC T6 or T5 according to PTB 02 ATEX 2194 CE 0518 (Ex) II 2 GD		
Isolation between case and electrical connection	> 1 MΩ at 50 VDC		
Isolation voltage	350 VAC		
Supply current	Max. 5 mA for VDC output, 20 mA for 4 ... 20 mA output signal		
Accuracy according DIN 16 086 (terminal point)	0,5 % F.S., 1,0 % F.S. for ranges 1 bar, 2,5 bar and 600 bar Please advise/note inclination of mounting position		
Repeatability	≤ ±0,15 % F.S.	≤ ±0,1 % F.S.	≤ ±0,1 % F.S.
Response time (10 ... 90 %)	≤ 5 ms		
Permissible			For T5 and T6 (EEx ib)
Operation temperature	-30 ... 85 °C	-30 ... 85 °C	-20 ... 60 °C T6 -20 ... 75 °C T5
Medium temperature	-30 ... 100 °C	-30 ... 200 °C (Silicon oil) -30 ... 150 °C (Halocarbon) 0 ... 130 °C (Almond oil)	-20 ... 60 °C T6 -20 ... 75 °C T5
Storage temperature	-40 ... 100 °C		
Compensated temperature	-20 ... 70 °C		
Temperature influence	±0,3 % / 10 K from 0 ... 50 °C (ref. 20 °C) for > 10 bar ±1,2 % / 10 K from 0 ... 50 °C (ref. 20 °C) for ≤ 10 bar		
Medium temperature influence	±0,2 % / 10 K		
Shock resistance	At 20 g / 20 ms ≤ 0,1 % F.S.		
Vibration	≤ 0,1 % F.S. for 0 ... 400 Hz, 20 g in all directions according IEC 770		
Noise of output signal	≤ 0,02 % F.S.		
CE-mark/EMC	Emission according EN 50 081-1 (March 1993) Immunity according EN 50 082-2 (March 1995)		
Electrical connection	4 PIN angle connector according EN 175301-803, cable connection, field housing		
Protection according EN 60 529/IEC 529	IP65, optional IP68		IP65 for dust with cable connection IP65 for gas with angle connector IP67 for gas with cable connection
Weight [kg]	0,25	0,4	0,25
Accessories, options	Weld in adapter		

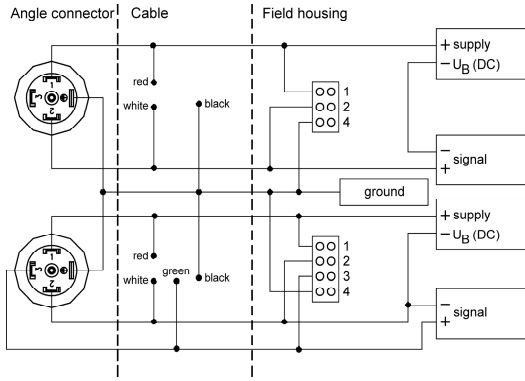
All specifications are subject to change without notice.

General dimensions [mm]



Electrical connection

2-wire



3-wire

Order information

Type	Output signal	Accuracy	Range	Engineering units	Protection	Process connection	Electrical connection	Options
XF	(01) 0/10 VDC	(050) 0,50 %	-1/ 1,5 ¹⁾	BAR	(=) IP65	(MG4F) G ½ A male flush mounting	(M1) Angle connector according EN 175301-803	(NH) Tagging wired
XFHT	(05) 0/5 VDC	(100) 1,0 %	-1/ 3		(ATEXGD) Intrinsically safe for gas and dust (only for type KXF with output signal 4/20 mA and electrical connection F2)	(M04F) ½ NPT male flush mounting	(F2) Cable connection	(6B) Oxygen cleaned (only with Halocarbon filling)
	(15) 1/5 VDC		0/ 1 ¹⁾²⁾		(ATEXG) Intrinsically safe for gas (only for type KXF with output signal 4/20 mA)	(M04FHS) ½ NPT male flush mounting, diaphragm Hastelloy C, socket 316Ti (1.4571)	(VA) Field housing in stainless steel (not for KXF (Exi))	(GX) Halocarbon filling
	(16) 1/6 VDC		0/ 2,5 ¹⁾		(IP68) IP68 (only with cable connection)	(MG5F) G ½ A male flush mounting with O-ring and sealing ring		(GZ) Almond filling
	(20) 0/20 mA		0/ 4			(MG6F) G 1 A male flush mounting according DIN 3852 part 2 form A		(HD1) Optional overpressure
	(42) 4/20 mA		0/ 6					
			0/ 10					
			0/ 16					
			0/ 25					
			0/ 40					
			0/ 60					
			0/100					
			0/250					
			0/400					
			0/600 ¹⁾					
			¹⁾ min. 1,0 %					
			²⁾ only process connection MG6F					
				psi and others on request		others on request	specify cable lengths in [m]	

How to order

Series	Type	Signal output	Accuracy	Range	Engineering units	Protection	Process connection	Electrical connection	Option
K	XF	42	050	0/10	BAR	=	MG4F	M1	NH

Ashcroft Instruments GmbH

Germany
Max-Planck-Str. 1, D-52499 Baesweiler
P.O. Box 11 20, D-52490 Baesweiler
Tel.: +49 (0) 2401 808-0, Fax: +49 (0) 2401 808-125

France
„206“ ZA Le Mandinet Rue des Campanules
F-77185 Lognes
Tel.: +33 (0) 1 60 37 25 30, Fax: +33 (0) 1 60 37 25 39

Website: www.ashcrofteurope.com

e-Mail: sales@ashcrofteurope.com

United Kingdom

Unit 5 William James House
Cowley Road, Cambridge CB4 0WX
Tel.: +44 (0) 12 23 39 55 00, Fax: +44 (0) 12 23 39 55 01