

Screwed Thermowells

Model SM, ST, RT and HT

Features

- Solid bore construction
- Materials according NACE MR 01-75/ISO 15156
- Selection of materials
- Standard and customer specifications
- ISO 228-1 and ANSI/ASME B1.20.1 connections

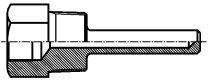
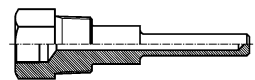
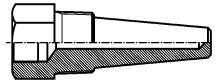
Ratings

from 620 bar at 20 °C
to 175 bar at 650 °C

Applications

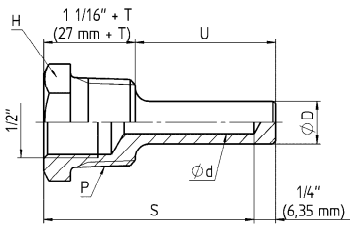
Chemical and petrochemical industry
Machine and apparatus construction
Food and beverage industry
Pulp and paper industry



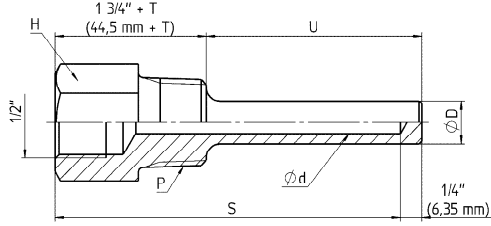
Technical specification	SM, ST	LSM, LST	RT	LRT	HT	LHT
Solid bore design						
Construction shank Lagging	Straight No Yes		Stepped No Yes		Tapered No Yes	
Standard U-length [inch] [mm]	1 5/8 41	2 1/2 63	4 1/2 114	7 1/2 191	10 1/2 267	13 1/2 343
Bore diameter [inch] [mm]	0,260 6,6		0,385 9,8 ¹⁾		7,0 172	
Pressure rating	Depending on process connection (1/2", 3/4" or 1") and bore diameter (0,260"/6,6 mm) for standard thermowell material stainless steel 316L (1.4404) (These data don't apply to other materials)					
at process connection [inch] °F °C	3/4, 1 PSI BAR		1/2 PSI BAR		3/4, 1 PSI BAR	
70 21	6500 448		6000 413		9000 620	
200 93	5500 379		5200 358		7700 531	
400 204	5000 345		4500 310		6700 462	
600 316	4000 275		4000 275		5800 400	
800 427	3800 262		3500 241		5300 365	
1000 538	3500 241		3300 227		5000 345	
1200 649	2500 172		2500 172		3700 255	
Process connection	G 1/2 A male, G 3/4 A male, G 1 A male according ISO 228-1 1/2 NPT male, 3/4 NPT male, 1 NPT male, 1 1/4 NPT male according ANSI/ASME B1.20.1 Others on request					
Instrument connection	1/2 NPSM female standard, optional 1/2 NPT female or G 1/2 female					
Material	Stainless steel 304 (1.4301), stainless steel 304L (1.4306), Stainless steel 316 (1.4401), stainless steel 316L (1.4404), stainless steel 316Ti (1.4571) Hastelloy B, Hastelloy C, Monel, Duplex, Nickel Other materials or coatings on request					
Certifications & tests	Material certificate 3.1.B to EN 10 204, hydrostatic test, dye penetration test, X-ray, hardness test, NACE/ISO 15156 certificate					
Accessories, options	Thermometers, Pt-100, thermocouples					

General dimensions [inch (mm)]

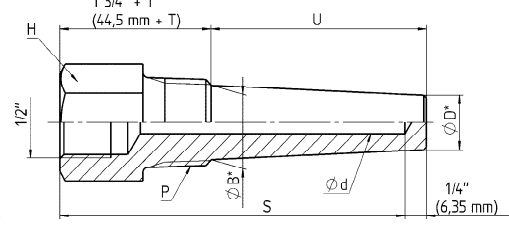
Type SM, LSM



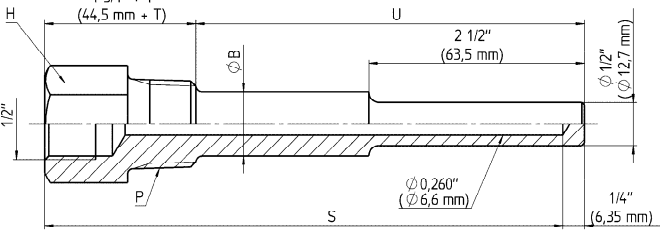
Type ST, LST



Type HT, LHT



Type RT, LRT



Lagging „T“		
T	U	
[inch]	[mm]	[inch]
1-1/2	38	= 1-5/8
2	50	= 2-1/2
3	76	≥ 4-1/2

Rev. B

For all types

P (G, NPT)	Ød		ØB / ØB*		ØD / ØD*		H	
	[inch]	[mm]	[inch]	[mm]	[inch]	[mm]	[inch]	[mm]
1/2	0,26	6,6	5/8 / 5/8	16 / 16	1/2 / 1/2	12,7 / 12,7	1-1/8	30
3/4	0,26	6,6	3/4 / 7/8	19 / 22	1/2 / 5/8	12,7 / 16	1-1/8	30
1	0,385	9,8	- / 1/8	- / 22	49/64 / 49/64	19,5 / 19,5	1-3/8	30
1	0,26	6,6	1/8 / 1-1/16	22 / 27	1/2 / 5/8	12,7 / 16	1-3/8	36
1	0,385	9,8	- / 1-1/16	- / 27	49/64 / 49/64	19,5 / 19,5	1-3/8	36

= not available

S	U	P	Type:			
			(inch)	(mm)	(G, NPT)	SM, ST, RT, HT
2-1/2	63	1-5/8	41	3/4	SM, - - -	
				1	SM, - - -	
4	102	2-1/2	63	1/2	- ST, -, HT	
				3/4	- ST, -, HT	
				1	- ST, -, HT	
6	152	4-1/2	114	1/2	- *, RT, HT	
				3/4	- ST, RT, HT	
				1	- ST, RT, HT	
9	229	7-1/2	191	1/2	- *, RT, HT	
				3/4	- ST, RT, HT	
				1	- ST, RT, HT	
12	305	10-1/2	267	1/2	- *, RT, HT	
				3/4	- ST, RT, HT	
				1	- ST, RT, HT	
15	381	13-1/2	343	1/2	- *, RT, HT	
				3/4	- ST, RT, HT	
				1	- ST, RT, HT	
18	457	16-1/2	419	1/2	- *, RT, HT	
				3/4	- ST, RT, HT	
				1	- ST, RT, HT	
24	610	22-1/2	572	1/2	- *, RT, HT	
				3/4	- ST, RT, HT	
				1	- ST, RT, HT	

For LRT, LST, LHT: S = 1 3/4" + T + U - 1/4" * = on request
For LSM: S = 1 1/16" + T + U - 1/4"

Order information

Process connection	U-length	Instrument connection	Lagging	Shank type	Bore	Material	Options
All connections are male (50) 1/2 NPT ¹⁾ (51) G 1/2 A ¹⁾ (75) 3/4 NPT (76) G 3/4 A (10) 1 NPT (11) G 1 A (12) 1-1/4 NPT 1) not for type SM, LSM 1) not for SM and bore 0,385 inch/9,8mm others on request	Inch dimension (0162) 1 5/8" ¹⁾ (only type SM and LSM) (0250) 2 1/2" ¹⁾ (0450) 4 1/2" ¹⁾ (0750) 7 1/2" ¹⁾ (1050) 10 1/2" ¹⁾ (1350) 13 1/2" ¹⁾ (1650) 16 1/2" ¹⁾ (2250) 22 1/2" ¹⁾ 1) not for type SM, LSM MM dimension (... mm) length in mm others on request	All connections are female (=) 1/2 NPSM (50) 1/2 NPT (51) G 1/2	(=) No lagging (L) With lagging (standard 1-1/2," 2" or 3" (38, 50 or 75 mm), see above table. Other lengths to be specified in inch or mm)	(SM) Limit space straight (only U = 1 5/8") ¹⁾ (ST) Straight (RT) Stepped ¹⁾ (HT) Tapered	Inch dimension (260) 0,260" (6,6 mm) (385) 0,385" ¹⁾ (9,8 mm) others on request MM dimension (... mm) Standard available 6,6 mm 7,0 mm 8,5 mm ¹⁾ 9,8 mm ¹⁾ 10,5 mm ¹⁾ 12,5 mm ¹⁾ 1) not for type RT and LRT others on request	(C) 304 (1.4301) (CL) 304L (1.4306) (S) 316 (1.4401) (SL) 316L (1.4404) (STI) 316Ti (1.4571) (M) Monel (H) Hastelloy C (G) Hastelloy B (N) Nickel (DU) Duplex others on request	(NH) Tagging stamped (2) Cap & chain stainless steel (BP) Buffed and polished (CDW2) Dye penetration test (CDRH) Rockwell hardness test (X-RAY) X-ray photo Material certificates according EN 10 204 (CD2) 2.2 (CD3) 3.1.B (CD5) NACE MR 01-75/ISO 15156 Hydrostatic internal pressure test (CDW9) 100 bar 1 min. (CDW4) to customer specification

How to order

Process Connection	Type	U-length	Instrument connection	Lagging	Shank type	Bore diameter	Material	Options
75	W	0250	=	L	HT	260	SL	2

Ashcroft Instruments GmbH

Germany
 Max-Planck-Str. 1, D-52499 Baesweiler
 P.O. Box 11 20, D-52490 Baesweiler
 Tel.: +49 (0) 2401 808-0, Fax: +49 (0) 2401 808-125

France
 „206“ ZA Le Mandinet Rue des Campanules
 F-77185 Lognes
 Tel.: +33 (0) 1 60 37 25 30, Fax: +33 (0) 1 60 37 25 39

Website: www.ashcrofteurope.com e-Mail: sales@ashcrofteurope.com

United Kingdom
 Unit 5 William James House
 Cowley Road, Cambridge CB4 0WX
 Tel.: +44 (0) 12 23 39 55 00, Fax: +44 (0) 12 23 39 55 01