

# Flanged Thermowells

## Model SF, RF and HF

According ANSI/ASME or DIN 43772

### Features

- Solid bore construction
- Materials according ISO 15156/NACE MR 01-75
- Selection of materials
- Standard and customer specifications
- DIN and ANSI/ASME process connections

### Ratings

DIN up to PN100

ANSI/ASME up to 2500 lbs

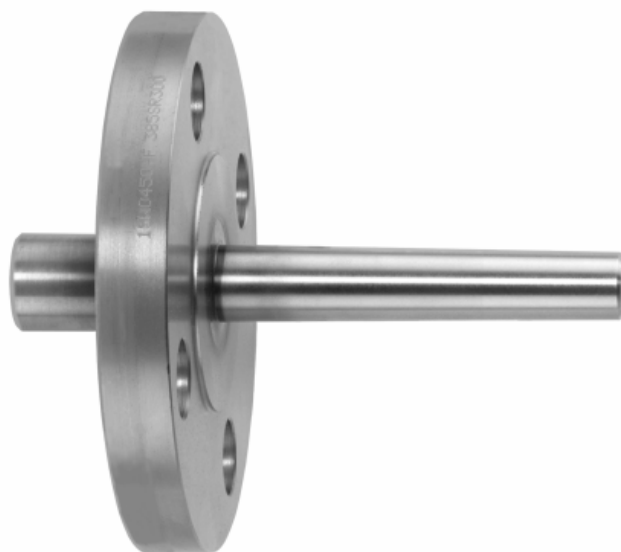
### Applications

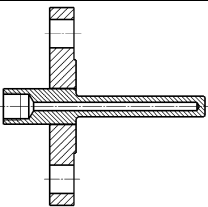
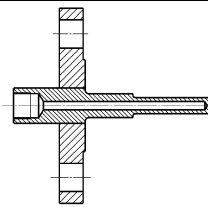
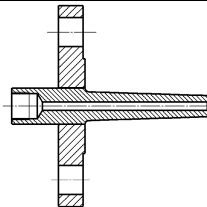
Chemical and petrochemical industry

Machine and apparatus construction

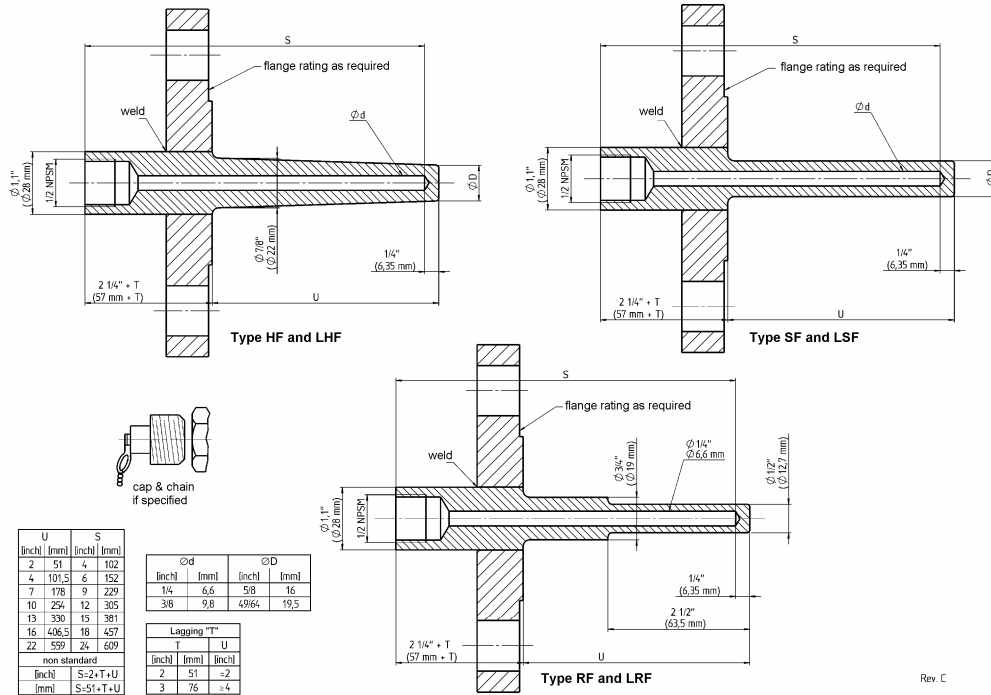
Food and beverage industry

Pulp and paper industry



Technical specification	SF	LSF	RF	LRF	HF	LHF
Solid bore design						
	Shank solid bore, flange welded on shank standard. Optional one piece design, built up design or to customer specification					
Construction shank Lagging	Straight No   Yes		Stepped No   Yes		Tapered No   Yes	
Standard lengths	3" (75 mm), others on request					
Standard U-length [inch] [mm]	2 51	4 101,5	7 178	10 254	13 330	16 406,5
Bore diameter [inch] [mm]	0,260 0,385 <sup>1)</sup> 6,6 8,5 <sup>1)</sup> 9,8 <sup>1)</sup> 10,5 <sup>1)</sup> Others on request, see coding table					
Pressure rating Process connection DIN Size Pressure class ANSI/ASME Size [inch] Pressure class [lbs] Facing	Depending on flange rating  DN25, DN40, DN50, DN80, DN100, others on request PN10, PN16, PN25, PN40, PN64, PN100, others on request  1, 1½, 2, 3, 4, others on request 150, 300, 600, 900, 1500, 2500 R (raised face), F (flat face) <sup>1)</sup> , J (ring joint type) Other forms, connections or standards are available on request					
Instrument connection	½ NPSM female standard, optional ½ NPT female or G ½ female					
Material	Stainless steel 304 (1.4301), 304L (1.4306), 316 (1.4401), 316L (1.4404), 316Ti (1.4571) Monel, Hastelloy B, Hastelloy C, Inconel, Tantalum, Duplex, Nickel Other materials or coatings on request					
Certifications & tests	Material certificate DIN EN 10 204 3.1, Hydrostatic test, dye penetration test, X-ray, Hardness test, ISO 15156/NACE certificate, stress calculation according to ASME Power Test Code 19.3 or Design Memo No. T/115					
Accessories, options	Thermometers, Pt-100, thermocouples					

## General dimensions [inch (mm)]



Rev. C

## Order information

Process connection	U-length	Instrument connection	Lagging	Type	Bore	Material <sup>1)</sup>	Flange facing	Pressure rating	Options
(10) 1" (DN25)	Inch dimension	All connections are female	(=) No lagging	(HF) Standard with Welded Flange Tapered Shank	Inch dimensions	(C) 304 (1.4301)	ANSI Flange	ANSI Flange	(NH) Tagging stamped
(15) 1 1/2" (DN40)	(0200) 2" (0400) 4" (0700) 7"	(=) 1/2 NPSM (50) 1/2 NPT (51) G 1/2	(L) With lagging (standard 3" (75mm), other lengths to be specified in [inch] or [mm])	(SF) Welded Flange Straight Shank	(260) 0,260" (6,6 mm) (385) 0,385" <sup>1)</sup> (9,8 mm) others on request	(CL) 304L (1.4306) (S) 316 (1.4401) (SL) 316L (1.4404)	(R) Raised face (F) Flat face <sup>1)</sup> (J) Ring joint type	150 300 600 900 1500 2500	(2) Cap & chain stainless steel (BP) Buffed and polished (FL.) Specify flange as per material code (e.g. FLM flange material Monel)
(20) 2" (DN50)	(1000) 10" (1300) 13" (1600) 16" (2200) 22"			(RF) Welded Flange Stepped Shank (only bore 0,260 (6,6mm))	MM dimension (... mm)	(M) Monel (H) Hastelloy C (N) Nickel (DU) Duplex	DIN flange	DIN flange	(CD5) certificate ISO 15156 (CDW2) Dye penetration test (CDRH) Rockwell hardness test (X-RAY) X-ray photo
(40) 4" (DN100)	MM dimension (... mm) length in mm			other construction such as: Solid machined, built up and to customer specification on request	standard available 6,6 mm <sup>1)</sup> 8,5 mm <sup>1)</sup> 9,8 mm <sup>1)</sup> 10,5 mm <sup>1)</sup>	<sup>1)</sup> flange material is the same as the shank material unless specified with code (FL.), see options	the flange facing depends on the process connection (nominal size and nominal pressure)	PN10 PN16 PN25 PN40 PN64 PN100	Material certificates acc. DIN EN 10 204 (CD2) 2.2 (CD3) 3.1 Hydrostatic internal pressure test (CDW9) 100 bar 1 min. (CDW4) To customer specification
others on request	others on request	others on request			others on request	others on request	others on request		

## How to order

Process connection	Type	U-length	Instrument connection	Lagging	Shank type	Bore diameter	Material	Flange facing	Pressure rating	Options
10	W	0200	=	L	HF	260	SL	R	150	2

## Ashcroft Instruments GmbH

Germany  
Max-Planck-Str. 1, D-52499 Baesweiler  
P.O. Box 11 20, D-52490 Baesweiler  
Tel.: +49 (0) 2401 808-0, Fax: +49 (0) 2401 808-125

France  
„206“ ZA Le Mandinet Rue des Campanules  
F-77185 Lognes  
Tel.: +33 (0) 1 60 37 25 30, Fax: +33 (0) 1 60 37 25 39

Website: [www.ashcrofteurope.com](http://www.ashcrofteurope.com)

e-Mail: [sales@ashcrofteurope.com](mailto:sales@ashcrofteurope.com)

## United Kingdom

Unit 5 William James House  
Cowley Road, Cambridge CB4 0WX  
Tel.: +44 (0) 12 23 39 55 00, Fax: +44 (0) 12 23 39 55 01